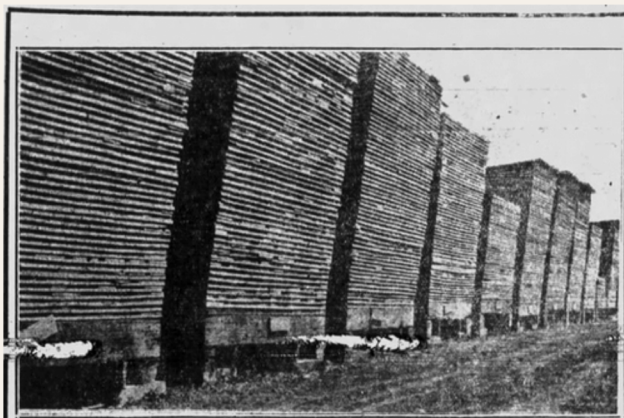


# NEWSLETTER

MAY 2024



We were happy to receive a donation of flooring from Whiting's Lumber, it is marked on the back with Whiting Lumber Butler, Tennessee.



The above is an actual photograph showing a portion of the very large stock of Hemlock framing and sheathing on the yard of Whiting Lumber company at Butler, Tenn.

We carry a large stock here in Elizabethton for immediate delivery in addition to having at our immediate disposal this large stock carried at the mill.

Special large sizes of dimension stock can be secured on very short notice.

Hemlock is a superior structural material and it costs no more.

**"Everything in the Building Line"**  
**SERVICE LUMBER CO.**

496

PHO NES

499

## What's new at the Museum!

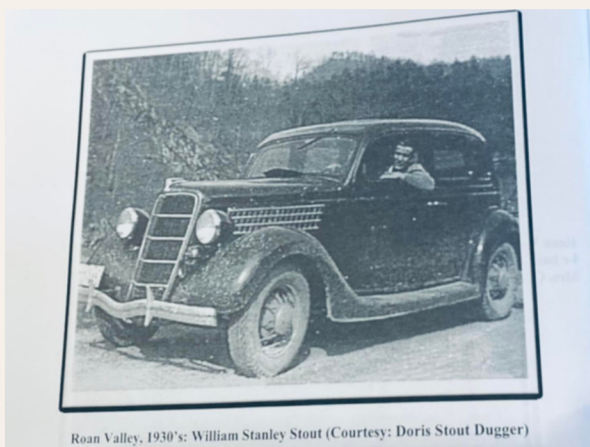
***Thanks to a TVA grant, the WS Stout Store is getting some much-needed love!***

Visitors and locals alike are often surprised to learn that one of the longest continually operated general stores in the state of Tennessee was located right here in Johnson County. From 1930, until his death at the age of 91 in 1995, William Stanley Stout served area families. Stout strategically built his store beside the tracks of the Southern Railway in Old Butler. However, that original location has rested beneath 100 feet of water in the center of Watauga Lake since December of 1948.



## THE BUTLER & WATAUGA VALLEY HERITAGE MUSEUM

continued from page 1



When the Tennessee Valley Authority (TVA) began its work to construct the Watauga Dam in the 1940s, business owners like Stout had to find a new location. Once again, he chose a strategic location in Pine Orchard on the new state Highway 67 and would operate there for almost 48 years. It would be another 16 years, after the store was donated to the Museum of Butler, that the W.S. Stout Store would find its permanent home on the grounds at Selma Babe Curtis Park.

It is only fitting, 75 years after the flooding of Old Butler, that the store is receiving much-needed restoration. Thanks to a \$5,000 donation from the TVA, work has begun on repairs to the 94-year-old structure in time for tours when the Museum opens on May 18 for the 2024 season. Those visiting the store will notice that the products being exhibited cover many decades which, when one understands that the store was in operation for 65 years, explains the wide range of items displayed in this unique time capsule that gives us a glimpse into our treasured past. Anecdotal stories about trap doors for chickens or a fun game of checkers make the W.S. Stout Store a wonderful attraction for all ages.

Other improvements at the Museum will enhance visitor experience as additional grants from the State of Tennessee and the Daughters of the American Revolution (DAR) will help fund repairs to the Daniel Boone monument and memorial brick garden, improve ADA compliant access, and provide specially curated exhibits during the season. Museum volunteers are also planning special programming including historical lectures, storytelling events and musical performances to the season schedule. To make exhibits and experiences more interactive, the museum will feature digital resources to help preserve and tell the story of "the town that wouldn't drown."

### ***Memorial Bricks may be purchased and placed in either the Memorial Garden or our American Veterans Memorial Walk.***

Memorial Bricks are \$125 each and may be ordered by mailing a completed form with a check or money order or in person at the Museum during normal business hours. Brick order forms are available for download on our website. Feel free to contact us with any questions or if you need assistance before placing your order. Proceeds benefit the Museum of Butler, TN



EXPERIENCE THE "TOWN THAT WOULDN'T DROWN"!



## THE BUTLER & WATAUGA VALLEY HERITAGE MUSEUM



The Watauga Dam turned 75 on December 1, 2023, so we are commemorating the loss of the Incorporated town of Butler, Tennessee during 2024. The Watauga Dam is a rock and earth filled dam. At the time of its completion, it was the highest of its kind. A total of 1,484,700 cubic yards of compacted clay is at the dam's core.

On the two sides of the core 2,000,000 cubic yards of rock were piled. The design of the dam was to build it in a terrace-like design. On December 1, 1948, the gates of the Watauga Dam were closed.

Nearly 12,000 acres of land had been acquired, 761 families were relocated. On August 29, 1948, the dam started generating power. The Watauga powerhouse is 2100 feet downstream from the bottom of the Watauga Dam. It contains an overhead crane, main transformers, generators, and their turbines along with their equipment. The two generators rated at 30,000 kWh each. A control building houses office space and control equipment for not only the Watauga powerhouse, but the South Holston and Wilbur Dams.

The Watauga Lake is 16 miles long and a shoreline of 109 miles. The total cost of the project was \$32,335,243.00.

### ***Celebrating the People:***

Mrs. Louise Hawkins Nave who taught music at a nearby school is standing in front of the original Anon Seminary building from 1860.



### ***Did you know?***

Butler, Tennessee was the only incorporated town to be inundated by the T. V.A. when they built Watauga Dam. The town is frequently referred to as "the town that wouldn't drown". The Museum celebrates the people of Butler and the Watauga Reservoir area.

### ***Museum of Butler, TN***

123 Selma Curtis Road  
Butler, TN 37640

website | [MuseumofButlerTN.org](http://MuseumofButlerTN.org)

phone | 423-281-1113

facebook | @museumofbutlertn